



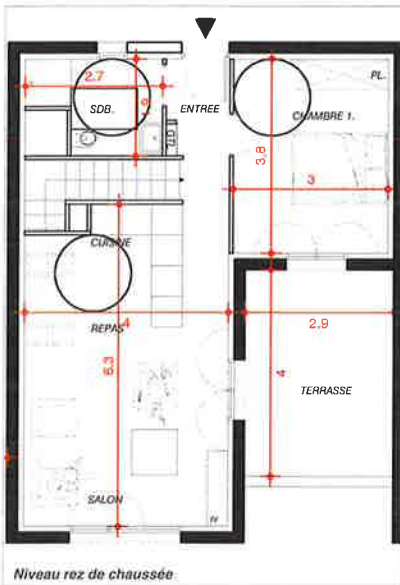
ELEVATIONS



VUE D'ENSEMBLE



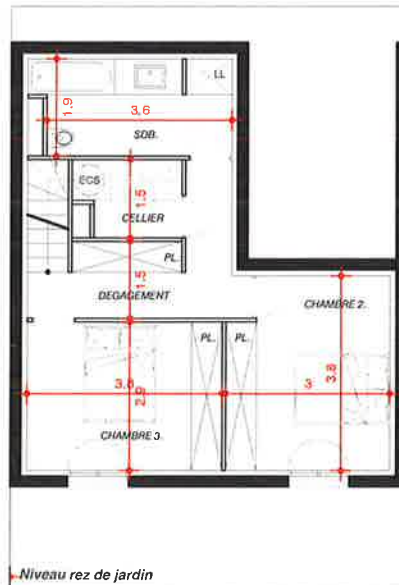
VUE INTERIEURE



Niveau rez de chaussée

SURFACES PRIVATIVES

ENTREE: 3 m²
 SDB 1: 4.2 m²
 CUISINE - REPAS - SALON: 24.6 m²
 CHAMBRE 1: 11.5 m²
 TERRASSE: 11.8 m²



Niveau rez de jardin

DEGAGEMENT: 7.2 m²
 CELLIER: 3 m²
 SDB 2: 7.1 m²
 CHAMBRE 2: 11.8 m²
 CHAMBRE 3: 11.1 m²

**BATIMENT III
 LOT N°25D4**

SURFACE HABITABLE: 83.5 m²
 SURFACE TERRASSE: 11.8 m²
 SURFACE TERRAIN: 50 m²

L'ALIVETU
 Commune de Bastelicaccia

