

# "Les Terrasses du Stiletto" - Batiment B2

Chemin du Stiletto - Ajaccio

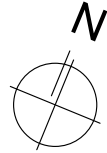
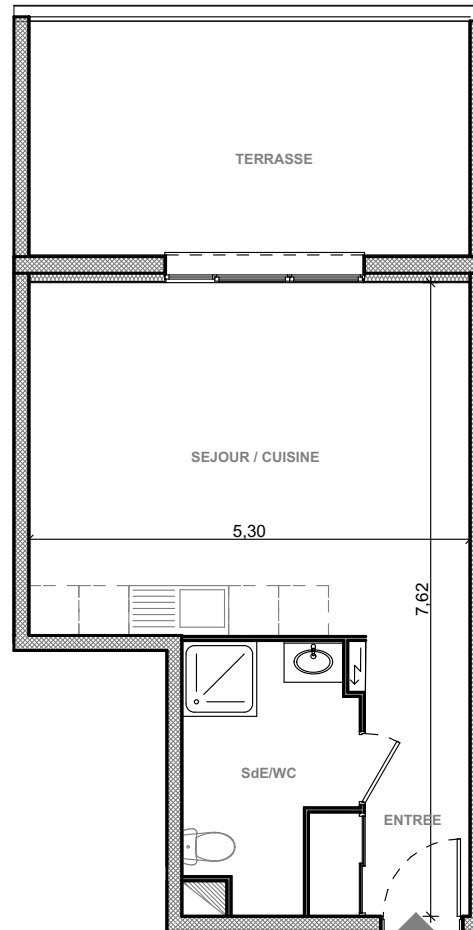
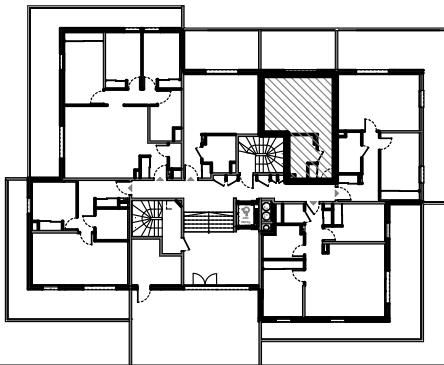
Appartement B2-03  
T1 RDC

## Surfaces habitables

Entrée	5.15 m <sup>2</sup>
Séjour/Cuisine	22.65 m <sup>2</sup>
Salle d'eau / Wc	5.75 m <sup>2</sup>

**Total** 33.55 m<sup>2</sup>

Terrasse 14.90 m<sup>2</sup>



Edition du 1/03/2017

**PLAN DE VENTE**