

# "Les Terrasses du Stiletto" - Batiment B2

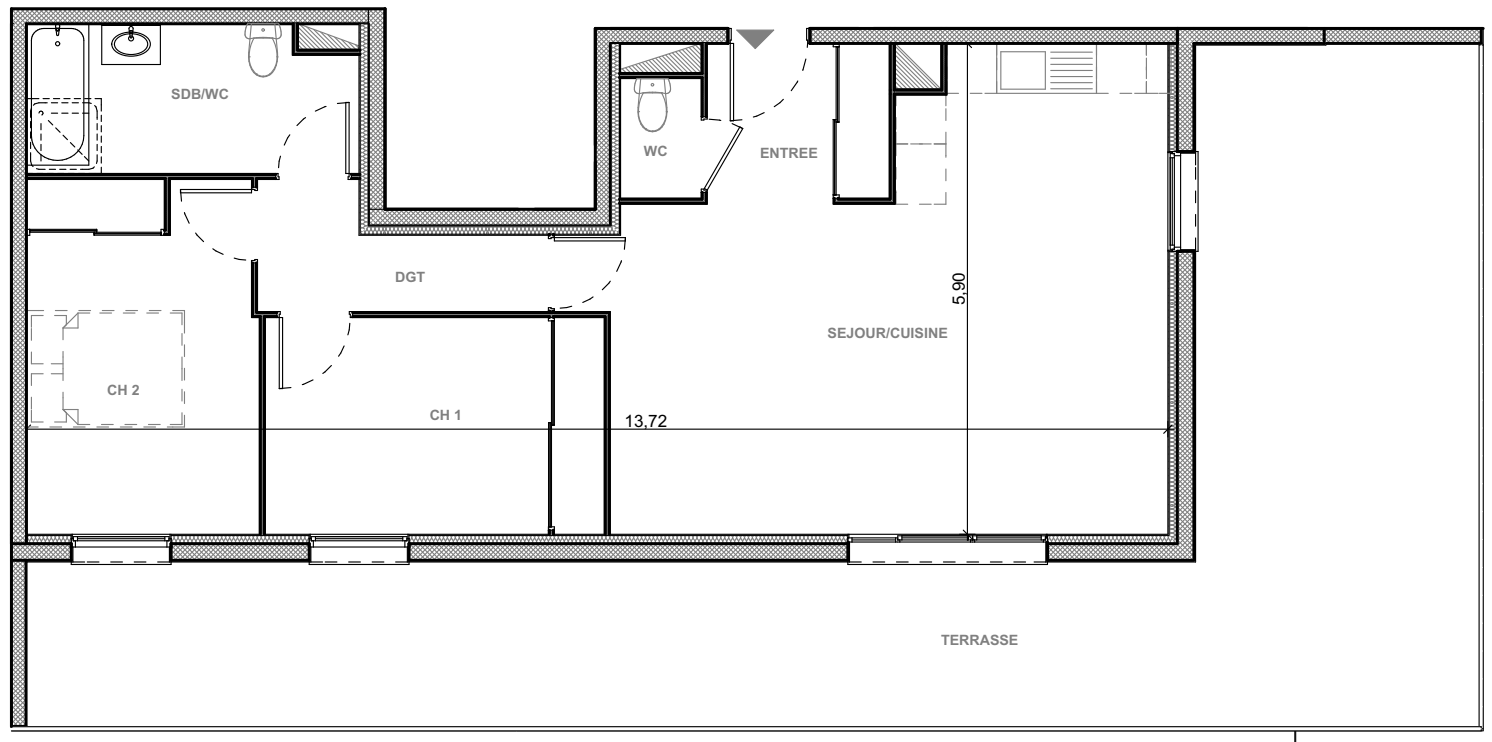
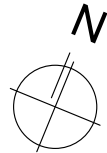
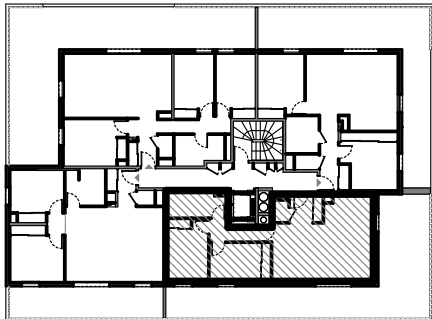
Chemin du Stiletto - Ajaccio

## Appartement B2-51

T3 R+5

### Surfaces habitables

Entrée	4.05 m <sup>2</sup>
Séjour/Cuisine	33.15 m <sup>2</sup>
Chambre 1	10.45 m <sup>2</sup>
Chambre 2	11.60 m <sup>2</sup>
Salle de bain/ Wc	7.05 m <sup>2</sup>
Wc	1.40 m <sup>2</sup>
Dgt	4.15 m <sup>2</sup>
<b>Total</b>	<b>71.85 m<sup>2</sup></b>
Terrasse	57.90 m <sup>2</sup>



Edition du 1/03/2017

**PLAN DE VENTE**